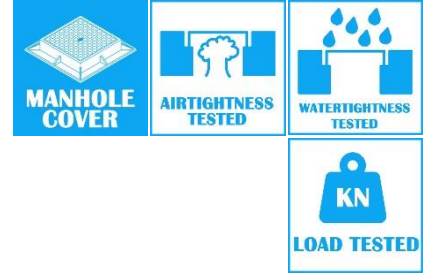
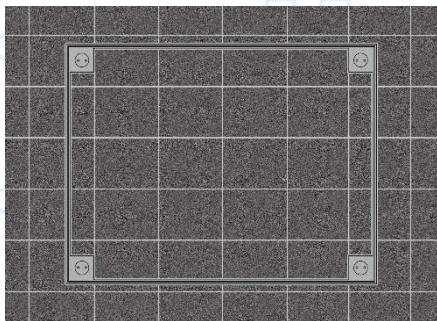
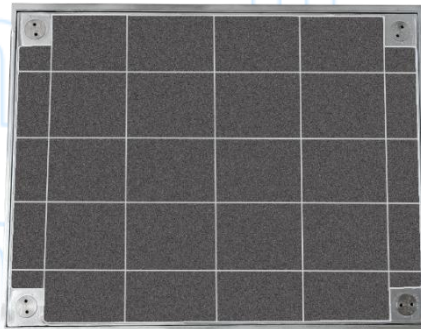


STAINLESS STEEL LIGHT DUTY AIRTIGHT & WATERTIGHT RECESSED COVER & FRAME (GRADE A15)



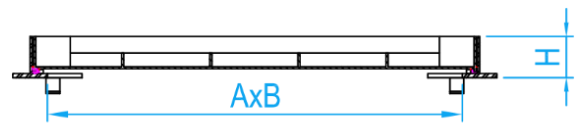
COMPLY WITH SS EN 124-2:2021 GRADE A15
SS 30:1999 (2012), GRADE C
BS 9124:2008

Type of Weight (Symbol)	SS EN 124-2	Design Load	Place of Installation	SS30 Grade	Design Load
	A15	30KN	In areas imposing particularly high wheel loads, eg. aircraft pavements.	C	30KN

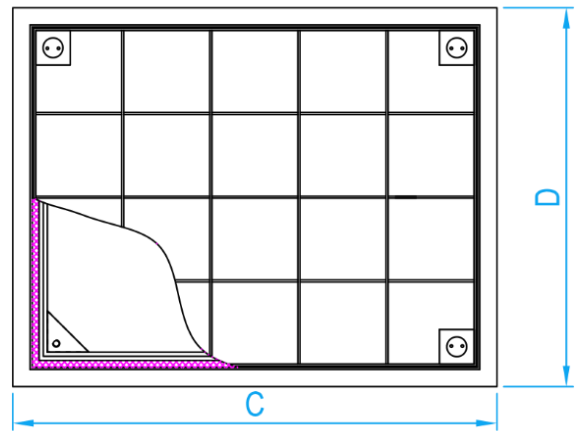


INSTALLATION EFFECT

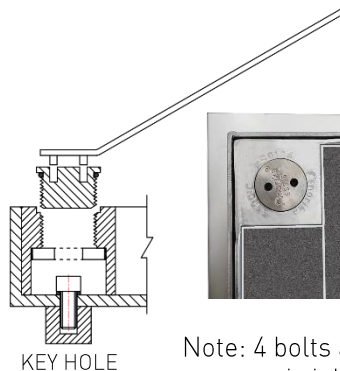
Norika designed keyhole system



SECTION VIEW



TOP VIEW



KEY HOLE



Note: 4 bolts and rubber seal to ensure airtight and watertight.

DIMENSIONS

SKU	MATERIAL	INTERNAL OPENING AxB (mm)	EXTERNAL CxD (mm)	HEIGHT H (mm)	Remarks/ Optional
SSRICCAT	Stainless Steel 304	600x450	700x550	64.5	Air & Water Tight
SSRICCAT316L	Stainless Steel 316L	600x450	700x550	64.5	Air & Water Tight